



Access and Language Options



[Login/Register](#)



[Home](#)

[About Us](#)

[Places to Go](#)

[How to use DisabledGo](#)

[News and Blog](#)

[Site Map](#)

You Are Here: [Home](#) > [Places to Go](#) > Venue



Holiday Inn Birmingham Bromsgrove - Leisure Facilities



Guide Last Updated: 24/10/2017



[Explain These Icons](#)

[Add To My Trip](#)

[View the Access Guide](#)

[Something Changed? Click Here](#)



Kiddeminster Road, Bromsgrove, Worcestershire, B61 9AB

0871 942 9142

<https://www.ihg.com/holidayinn/hotels/gb/en/worcestershire/bhxbr/hotel/detail>

Venue Reviews

Average Rating: ★★★★★

[Review this Venue](#)

Access Guide

Leisure Facilities Introduction

Collapse -

Related Access Guide(s)

Collapse -

- [For the Holiday Inn Birmingham Bromsgrove DisabledGo access guide please click here \(new tab\).](#)

Leisure Facilities Information

Collapse -

- The leisure facilities are located on the ground floor, at the rear left of the hotel.

Getting Here

Collapse -

By Road

Collapse -

- This hotel is located on the outskirts of Bromsgrove, on the A448.
- This hotel has a car park which is free for all users.

Cookie Policy

Collapse -

- There is not a bus stop within 150 metres of the hotel.
- The nearest bus stop is located on the A448, Kidderminster Road, approximately 735 meters from the hotel.
- [For more information on buses in the West Midlands please click here \(opens new tab\).](#)

By Train

Collapse -

- The nearest Railway Station is Bromsgrove.
- Bromsgrove Station is situated in the centre of Bromsgrove, located approximately 2.6 miles from the hotel. There are bus and taxi routes to the hotel from the station.
- [For more information on National Rail please click here \(opens new tab\).](#)

Getting Help and Assistance

Collapse -

- There is a member of staff available for help and assistance.
- Staff receive disability awareness/equality training.
- Staff do not receive deaf awareness training.
- There is not a member of staff trained in British Sign Language.
- British Sign Language interpreters cannot be provided on request.
- The alternative formats documents can be provided in include; large print on request.
- There is an assistance dog toilet or toileting area at the venue/near by.
- The assistance dog toilet or toileting area is located on the grass surrounding the hotel.
- Water bowls for assistance dogs are available.
- There are not mobility aids available.

Parking

Collapse -

Parking

Collapse -

- The hotel does have its own parking facilities.
- The car park is located at the front and rear of the hotel.
- The car park type is open air/surface.
- The car park does not have a height restriction barrier.
- The car park does not have a barrier control system.
- The car park surface is tarmac.
- There is a/are Blue Badge parking bay(s) available.
- The Blue Badge bay(s) is/are clearly marked and signposted.
- There is/are 3 designated Blue Badge parking bay(s) within the car park.
- The dimensions of the designated Blue Badge parking bay(s) surveyed are 340cm x 600cm (11ft 2in x 19ft 8in).
- There is a 120cm hatched zone around the Blue Badge parking bay(s).
- Parking spaces for Blue Badge holders do not need to be booked in advance.
- Clearly marked/signposted parent and child parking bays are not available.
- All parking spaces are provided on a first come first served basis.

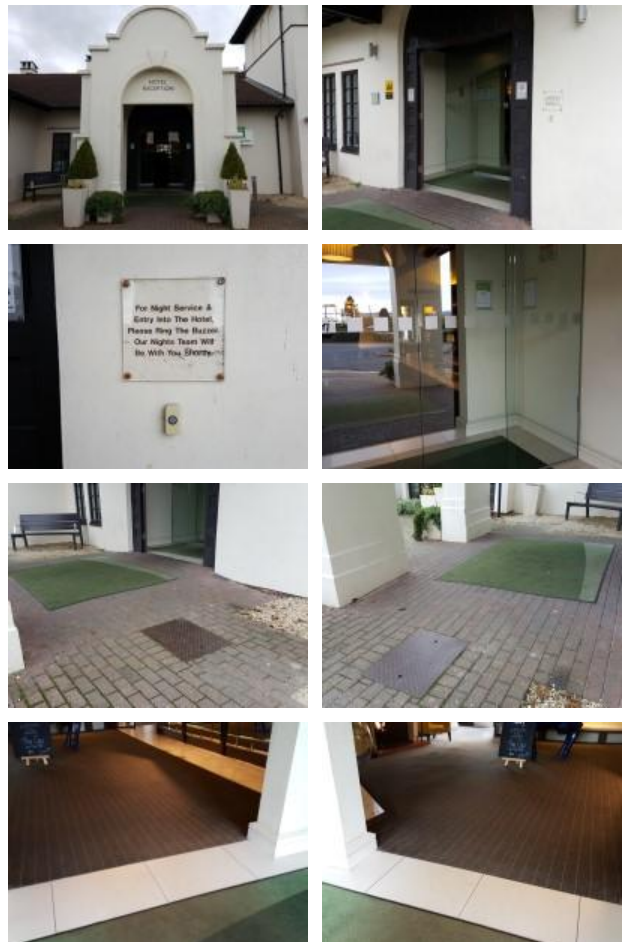
[Cookie Policy](#)

Paying	Collapse -
<ul style="list-style-type: none"> There are not parking charges for the car park. 	
Access from the Car Park	Collapse -
<ul style="list-style-type: none"> The route from the car park to the entrance is accessible to a wheelchair user with assistance. Assistance may be required because there is/are dropped kerbs. The entrance is not clearly visible from the car park. The route from the car park to the entrance is clearly signposted. The surface on the approach to the entrance is block paving. There is not a road to cross between the car park and the entrance. There is no tactile paving on dropped kerbs between the car park and the entrance. The nearest designated Blue Badge parking bay is approximately 10m (10yd 2ft) from the hotel entrance. 	
Drop-off Point(s)	Collapse -
<ul style="list-style-type: none"> There is not a/are not clearly marked drop-off point(s). 	

Outside Access (Hotel Entrance)

Collapse -

Entrance	Collapse -
<ul style="list-style-type: none"> This information is for the entrance located at the front of the hotel. The entrance area/door is clearly signed. There is ramped/sloped access at this entrance. There is a canopy or recess which provides weather protection at this entrance. The entrance door(s) does/do contrast visually with its immediate surroundings. The bell/buzzer is not in a suitable position to allow wheelchair users to gain access. The height of the bell/buzzer is 126cm (4ft 2in). The main door(s) open(s) away from you (push). The door(s) is/are double width. The door(s) is/are permanently held open. The width of the door opening is 164cm. There is a second set of doors. The door(s) open(s) automatically. The door(s) is/are double width. The width of the door opening is 127cm. There is a member of staff available for assistance at this entrance. 	
Cookie Policy	

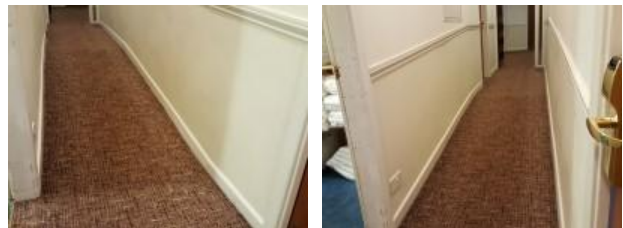
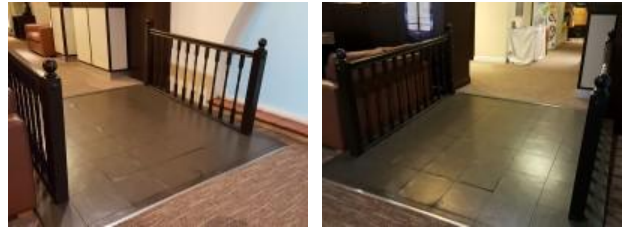


Ramp/Slope	Collapse -
<ul style="list-style-type: none"> The ramp/slope is located in front of the entrance and immediately beyond the second set of doors. The gradient of the ramp/slope is slight. 	

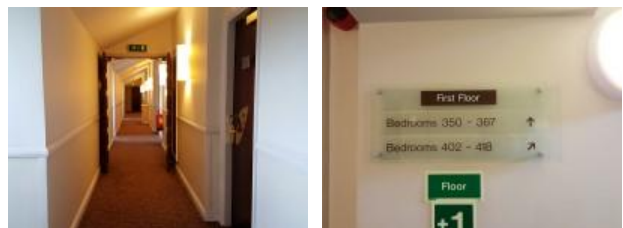
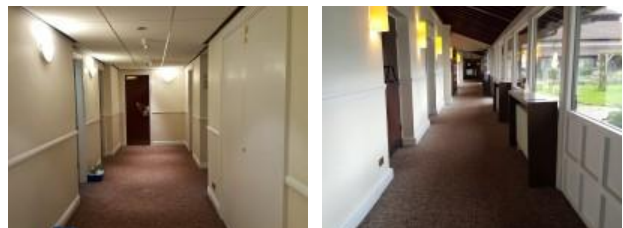
Getting Around

Collapse -

Access	Collapse -
<ul style="list-style-type: none"> There is step free access throughout the building. There is a slight ramp, with handrails on both sides, for access to rooms and Revive Leisure on the ground floor. This ramp is located to the rear of the restaurant on the ground floor and is just before Revive Leisure and rooms 125 to 141. This ramp is shown in photographs 1 and 2. There is a slight ramp, with no handrails, for access to rooms 101 - 123. The width of the ramp/slope is 108cm (3ft 7in). This ramp is on the ground floor, towards the rear right of the building and is in the passageway before rooms 101 - 123. This ramp is shown in photographs 3 and 4. There is a steep ramp, with no handrails, for access to rooms 301 - 315. The width of the ramp/slope is 108cm (3ft 7in). This level change is on the third floor, just before room 315. This ramp is shown in photographs 5 and 6. 	



Circulation	Collapse -
<ul style="list-style-type: none"> There are doors in corridors/walkways which have to be opened manually. There are corridors/walkways with a surface width of less than 120cm (excluding any permanent obstructions over a small distance). The type of flooring in corridors/walkways is carpet and tiles. There is good colour contrast between the walls and floor in the majority of corridors/walkways. The lighting levels are good. Access to other floors/levels is via stairs and lift. 	



Signage	Collapse -
<ul style="list-style-type: none"> Wayfinding signage is provided. The colour, design and typeface of signs is consistent throughout the building. 	

Audio	Collapse -
<ul style="list-style-type: none"> This venue does play background music in public areas. Music is played in the bar area. 	

Cookie Policy

- There is a hearing assistance system in the public areas of the building.
- The system is a portable loop.
- A portable hearing loop is located in the bar/restaurant and can be used in other areas of the hotel if requested. There is also a fixed hearing loop at reception.
- The hearing assistance system is available only on request.

Opening Times (Revive Club and Spa)

Collapse -

- Monday 08:00 - 20:00.
- Tuesday 08:00 - 20:00.
- Wednesday 08:00 - 20:00.
- Thursday 08:00 - 20:00.
- Friday 08:00 - 20:00.
- Saturday 08:00 - 20:00.
- Sunday 08:00 - 20:00.

Entrance (Leisure Facilities)

Collapse -

Entrance

Collapse -

- This information is for the entrance located on the ground floor, at the rear of the hotel.
- The entrance area/door is not clearly signed.
- There is ramped/sloped access at this entrance.
- There are no doors at this entrance.
- The width of the door opening is 154cm.



Ramp/Slope

Collapse -

- The ramp/slope is located in front of the entrance.
- The gradient of the ramp/slope is slight.
- The ramp/slope is permanent.
- There is a level landing at the top of the ramp/slope.
- There is a/are handrail(s) at the ramp.
- The handrail(s) is/are on both sides going up.
- The lighting levels at the ramp/slope are good.

Reception (Leisure Facilities)

Collapse -

Reception

Collapse -

- The reception point is located to the left of the leisure facilities entrance.
- The reception point is approximately 1m (3ft 3in) from the leisure facilities entrance.
- The reception area/desk is clearly visible from the

[Cookie Policy](#)



- There is step free access to the reception point.
- There is a clear unobstructed route to the reception point.
- There are windows, TVs, glazed screens or mirrors behind the reception point which could adversely affect the ability of someone to lip read.
- The reception counter is not placed in front of a background which is patterned.
- The lighting levels at the reception point are good.
- The height of the reception counter is high (110cm+).
- There is sufficient space to write or sign documents on the counter.
- There is not a lowered section of the counter.
- The counter is staffed.
- Clipboards can be provided to anyone who is unable to use the desk.
- There is not a hearing assistance system at the reception point.
- Signs and universally accepted symbols or pictograms, indicating lifts, stairs, WCs, circulation routes and other parts of the building are not provided in the reception area.
- The type of flooring in the reception area is carpet.



Reception Waiting Area

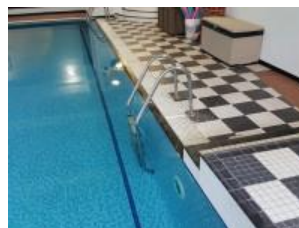
Collapse -

- There is a waiting area close to the reception point.
- Access to the waiting area is unobstructed.
- There are seats with armrests on both sides.
- There is sufficient space for a wheelchair user to use the waiting area.

Swimming Pool

Collapse -

- There is not level access from the changing area to the swimming pool.
- There is not a ramped entrance into the water.
- There is a wet side chair available.
- There is not a hoist for wheelchair users to access the water.
- There are not steps into the swimming pool.
- There is a ladder type entrance into the water.
- There is a handrail on both sides of the ladder.



Step(s) (Swimming Pool)

Collapse -

- There is a/are step(s) located leading from the female/male changing rooms.
- The step(s) is/are used to access The steps are used to access the swimming pool from the changing rooms.

[Cookie Policy](#)

- The height of the step(s) is/are between 15cm and 18cm.
- The height of the step(s) is/are 16cm.
- The going of the step(s) is/are between 30cm and 45cm.
- There is not a/are not handrail(s) at the step(s).
- The lighting levels at the step(s) are good.



Comments

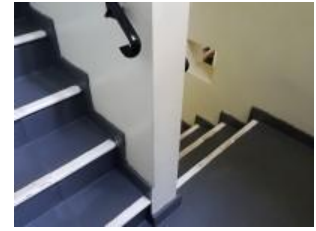
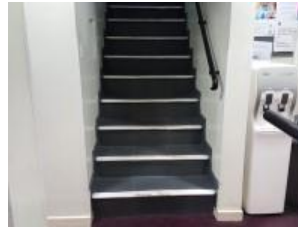
Collapse -

- The first step is not clearly marked.
- The second and third step's are clearly marked.

Step(s) (Gymnasium)

Collapse -

- There is a/are step(s) located just past the entrance to the gymnasium.
- The step(s) is/are used to access The steps lead from the ground floor to the lower ground floor and are used to access the gymnasium.
- There is/are 15+ step(s).
- The step(s) is/are clearly marked.
- The height of the step(s) is/are between 15cm and 18cm.
- The going of the step(s) is/are not between 30cm and 45cm.
- There is a/are handrail(s) at the step(s).
- The handrail(s) is/are on the right going up.
- Handrails are at the recommended height (90cm-100cm).
- Handrails do cover the flight of stairs throughout its length.
- Handrails are easy to grip.
- Handrails do not extend horizontally beyond the first and last steps.
- The lighting levels at the step(s) are good.



Fitness Suite (Gymnasium)

Collapse -

Access to Fitness Suite

Collapse -

- The fitness suite is located on the lower ground floor.
- The fitness suite is 18m (19yd 2ft) from the leisure facilities entrance.
- There is not level access to the fitness suite.
- There are doors into the fitness suite.
- The doors open away from you (push).
- The doors are single.
- The doors are heavy.
- The opening is 76cm (2ft 6in) wide.



Fitness Suite (General)

Collapse -

- Staff receive no training in assisting disabled people.
- A portable hearing loop is not available for induction.
- There is clear manoeuvring space between equipment.

[Cookie Policy](#)

to all of the equipment.

Changing Area (Male)

Collapse -

Changing Area

Collapse -

- There is a/are changing area(s) available.
- The changing area that was surveyed is located on the right just past reception.
- The changing area is approximately 6m from the leisure facilities entrance.
- The changing area is approximately 3m from reception.
- The changing area is approximately 8m from the swimming pool.
- There is step free access to the changing area.
- The facilities available within the changing area include; standard showers, standard toilets and baby change facilities.
- This is a male changing area.
- Similar female changing area(s) are available.
- The door(s) open(s) away from you (push).
- The door(s) is/are single width.
- The door(s) is/are heavy.
- The width of the door opening is 76cm.
- The type of flooring in the changing area is tiles and concrete.
- There is not a flashing fire alarm beacon within the changing area.
- There are changing benches or seats within the changing area.
- There are lockers within the changing area.
- There is a/are locker(s) within reach for a wheelchair user.
- There is not a water dispenser available.
- The lighting levels in the changing area are good.



Shower Facilities

Collapse -

- Shower facilities are available.
- There is ramped/sloped access to the shower facilities.
- There is a steep ramp to access the shower cubicles.
- Fixed.
- The height of the shower head(s) is/are 185cm.
- The shower control type(s) is/are twist/turn.
- There is no seat for the shower(s).
- There is not a/are not wall-mounted grab rail(s) available for the shower(s).

Toilet Facilities

Collapse -

- Toilet facilities are available.
- There is step free access to the toilet(s).

[Cookie Policy](#)

- An ambulant toilet with wall-mounted grab rails is not available.
- The wash basin(s) tap type is lever.
- The lighting levels in the toilet(s) are good.

Baby Changing Facilities

Collapse -

- Baby changing facilities are available.
- Baby changing facilities are located in the changing area.
- The baby change table is not set against the wall, permanently fixed at 75cm from the floor.
- The baby change table is not height adjustable.
- The height of the baby change table once extended is 117cm.

Who we are...

- Homepage
- About Us
- Access Icons
- FAQs
- Contact Us
- Press and Media

The way we work...

- Website Conditions
- Acceptable Use Policy
- Cookie Policy
- Privacy Policy
- Accessibility Policy
- Common Access Guide Terms Explained

Our support for business

Disabled Charities and Useful Links
FAQs Around Our Surveyors

Follow @DisabledGo

Join us...

- Facebook
- Twitter
- Google+
- Switch to mobile site



eCommerce Solutions by PureNet